

Here's what to expect in this month's newsletter:

- Welcome Back (and to a new year!)
- Building your research portfolio
- Upcoming events & updates
- Faculty Spotlight

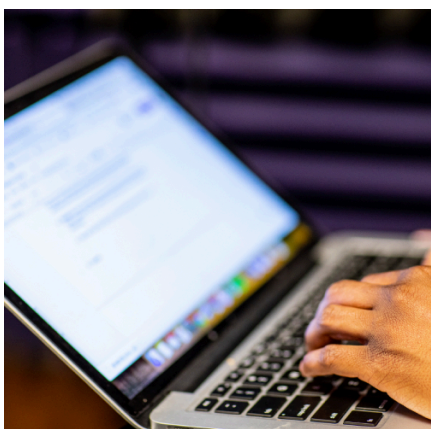


Welcome Back (and to a new year)

Stressed about jumping back into things? Take five minutes for yourself with this [meditation exercise](#). Even if New Years resolutions do not resonate with you, it's important to take some time for self-care.

WATCH ON YOUTUBE

>



Building your research portfolio

Navigating an academic institution can be challenging for faculty members, especially for newly-hired assistant professors. Senior faculty were able to provide a Q&A session to answer more specific funding questions.

LEARN MORE HERE

>



Upcoming events and updates

Updates:

Martin Luther King Jr. Tribute Awards

Congratulations to Rabi Yunusa, assistant teaching professor of HSPop and DGH, for receiving this year's [MLK Community Service Award](#).

FDP Meeting

Tuesday, January 16 | 12 – 1 p.m. | HRC 375 & Online
Craig Brownson will be sharing a Budget 101 where faculty can get a closer look on how money flows within UW and how it relates to research funding. A Q&A will be followed.

Navigation Misinformation in Community Health

Tuesday, January 30 | 12 – 1 p.m. | Online
Hot Topics in Practice is a monthly webinar forum to discuss the issues currently affecting public health practice.

Portable Methods for Biomarker Data Collection in the Field

Thursday, January 18 | 2 – 3:30 p.m. | Raitt Hall 233/230
CSDE is offering a hands-on workshop in biomarker methods that provide quick on-site measurements in non-clinical settings without the need to transport samples back to a lab.

Guest Expert Webinar: AI in Academia: Teaching Challenges and Opportunities

Tuesday, January 24 | 11a.m. – 12 p.m. | Online
In this webinar, Professor Julia Shaffel explains why we owe it to our students to adjust our teaching practices considering AI technology, and she presents some practical suggestions for how to do so.

The Northwest Federal Statistical Research Data Center (NWFSRDC): Enabling Access to Confidential, Unpublished Data from the Federal Statistical System

Wednesday, January 24 | 12:30 p.m. – 1:30 p.m. | HRC 101 & Online
This workshop will give a general introduction to- the data available in the University of Washington's Northwest FSRDC, some examples of work done with different kinds of data, and the process of requesting access to this data.

Strengths-Based Approaches to Indigenous Health Research

Friday, January 19 | 12:30 p.m. | Parrington Hall 360 & Online

Panel: Demographic Methods for Estimating Mortality During Armed Conflict

Friday, January 26 | 12:30 p.m. | Parrington Hall 360 & Online

Survey Methods I: Online Survey Design & Administration with REDCap

Thursday, February 1 | 2 – 4 p.m. | HRC 101 & Online
Come join us to learn how you can use REDCap to support your next data collection activity, from sending out a single survey to a few participants to administering a large longitudinal research study.

What Changed Between Gen X and Millennials? Investigating Recent Declines in US Fertility

Friday, February 2 | 12:30 p.m. | Parrington Hall 360 & Online

Survey Methods II: Statistical Analysis of Surveys in R

Wednesday, February 7 | 1:30 – 3 p.m. | HRC 101 & Online
Introduction to statistical analysis of data arising from probability surveys using the survey package in R with Jessica Godwin.

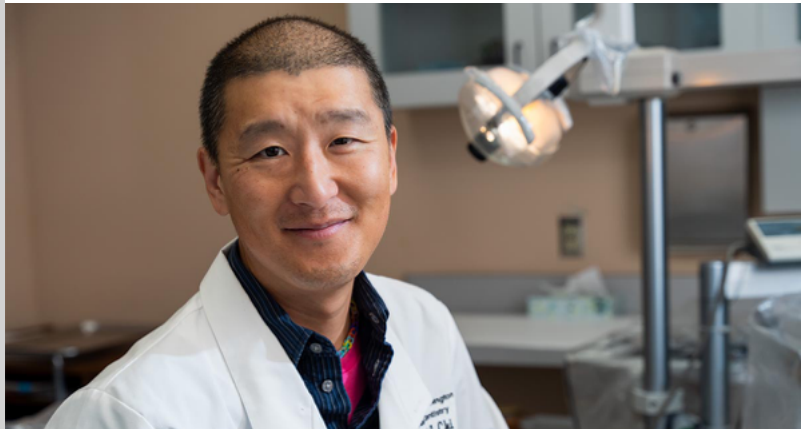
A Race Conscious Approach to Investigating U.S. Endometrial Cancer Inequity

Friday, February 9 | 12:30 p.m. | Parrington Hall 360 & Online

Institute of Translational Health Sciences

Subscribe here for news and events:

Faculty spotlight



Donald Chi

Dental care has historically not been considered essential health care in the American medical system. Learn about how Donald Chi and Yup'ik communities partner to improve oral health of Alaska Native children.

VIEW ON SPH BLOG

>

[UW HOME](#)

[SPH HOME](#)

[SPH FACULTY](#)

BE BOUNDLESS
FOR WASHINGTON

FOR THE WORLD



[CONTACT US](#) | [PRIVACY](#) | [TERMS](#)

© 2024 UW School of Public Health

This email was sent to
[Unsubscribe or change your email preferences](#)