

COLLABORATION | COMMUNITY | EQUITY, DIVERSITY AND ANTI-RACISM | MEANINGFUL POSITIVE IMPACT | INNOVATION | SHARED LEARNING

STATE OF THE SCHOOL ADDRESS 2024

Presented by Dean Hilary Godwin

SCHOOL OF PUBLIC HEALTH
UNIVERSITY *of* WASHINGTON







THIS OFRENDA IS
IN HONOR OF THE
HEROES WHO
DIED TO GIVE US
THE RIGHT TO
VOTE

DÍA DE LOS MUERTOS





Thank you!

FLOW OF PRESENTATION

- Global and national context
- The challenging landscape of higher education
- State of our School
- Priorities, opportunities and challenges
- Examples of the great impact of your work
- Question and answer





To have the impact we strive for, **we must work together** to overcome the forces that seek to divide us.



SCHOOL OF PUBLIC HEALTH
UNIVERSITY *of* WASHINGTON



A world of

HEALTHY PEOPLE

COLLABORATION | COMMUNITY | EQUITY, DIVERSITY AND ANTI-RACISM | MEANINGFUL POSITIVE IMPACT | INNOVATION | SHARED LEARNING



Academe

MAGAZINE
OF THE AMERICAN
ASSOCIATION
OF UNIVERSITY
PROFESSORS

FALL 2023

**CONFRONTING LEGISLATIVE
ATTACKS ON  HIGHER EDUCATION**



ATTENTION:

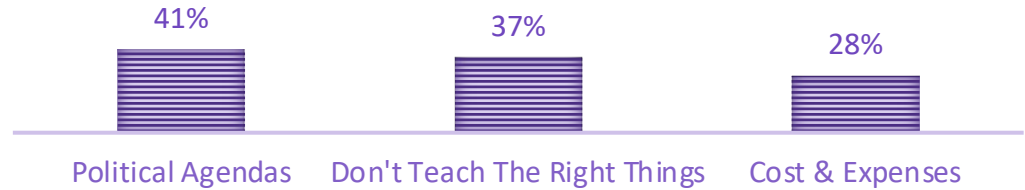
To help prevent the spread
of Coronavirus (COVID-19),
playgrounds are closed
until further notice.



DECLINE IN DEMAND FOR AND PERCEIVED VALUE OF HIGHER EDUCATION

- Decreasing population of 18-year-olds
- Multi-year decrease in enrollment, especially among men
- Increased vocal percentage questioning the **VALUE** of college

LACK OF CONFIDENCE IN HIGHER EDUCATION



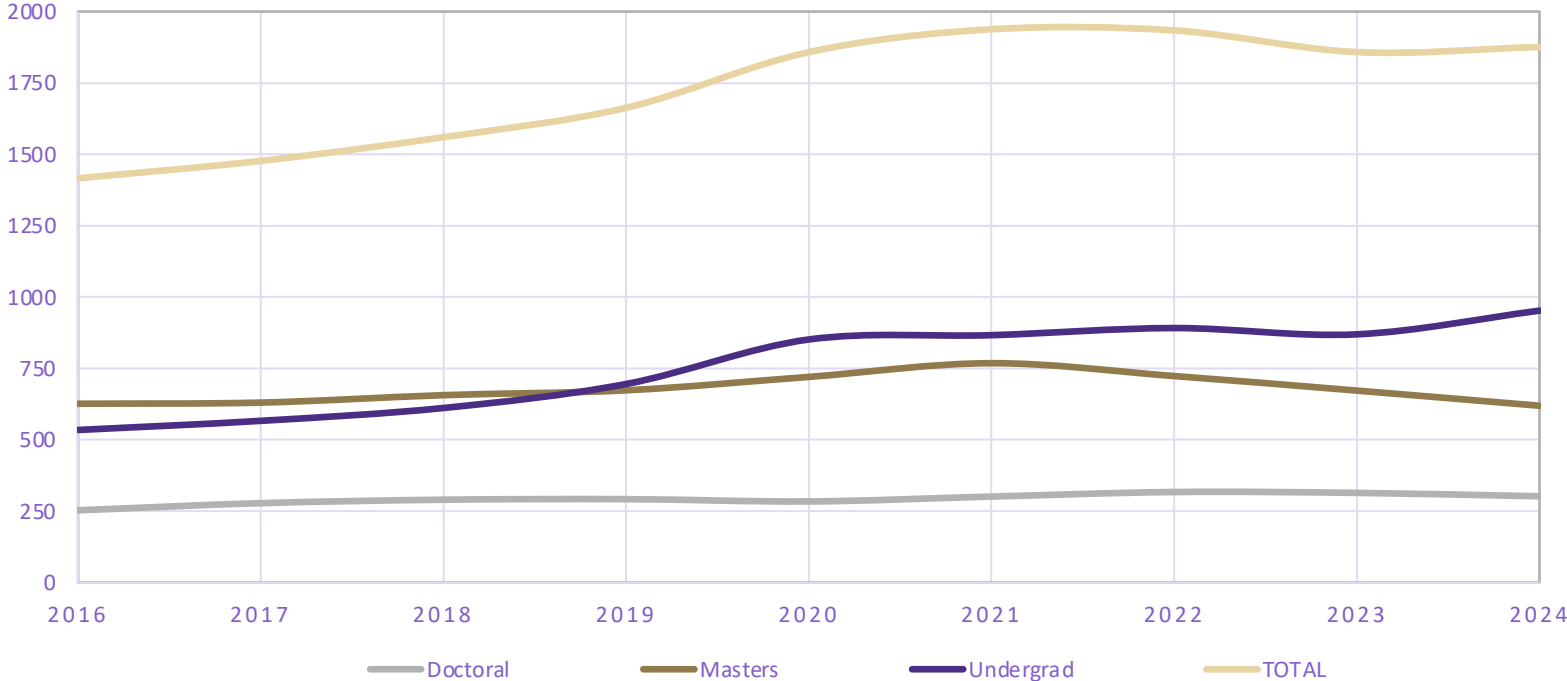


NATIONALLY, APPLICATIONS AND ENROLLMENTS IN PH GRADUATE PROGRAMS ARE DOWN

| | 2023 Applications | 2023 Acceptances | 2023 New Enrollments |
|-----------|-------------------|------------------|----------------------|
| Overall | - 2% | - 10% | -9% |
| Doctoral | - 1% | - 3% | -6% |
| Masters | - 13% | - 17% | -16% |
| Bachelors | 24% | 7% | 7% |



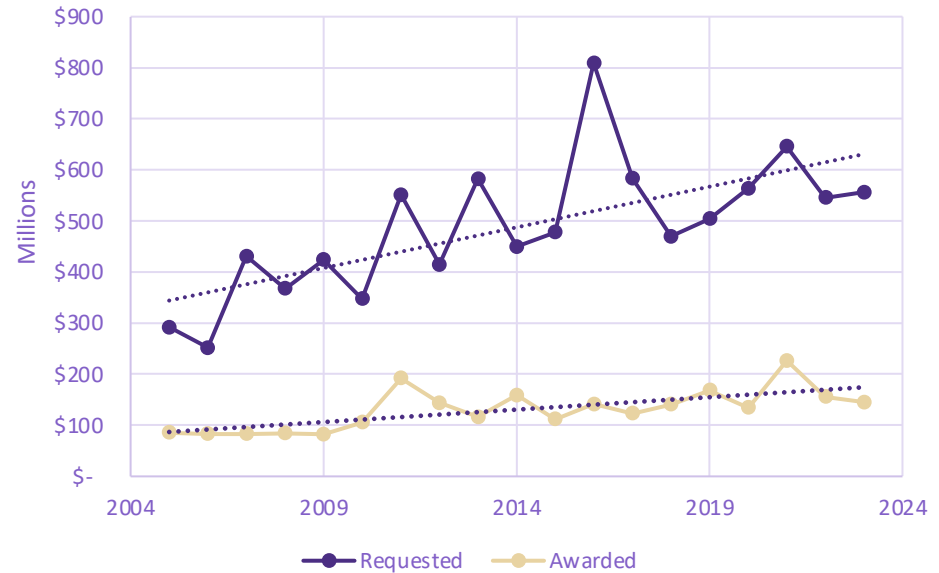
FALL ENROLLMENTS IN SPH PROGRAMS OVER TIME



WE ALSO CONTINUE TO SEE GROWTH IN OUR RESEARCH ACTIVITIES

- Top 5 in total funding amongst public health schools; #6 in NIH grants awarded
- Top 3 in total funding amongst UW schools

Research funding requested and awarded



CHALLENGES: RISING COSTS

- Inflation nationally and globally
- Essential merit and cost of living adjustments
- Salaries for ASEs
- Rising costs of central technology costs and services

CHALLENGES: CONSTRAINTS ON REVENUE GROWTH

- Limits on UW Seattle undergraduate enrollment
- Limits on in-state undergrad tuition cost
- National demand for graduate public health degrees
- Commitment to affordable graduate tuition



CHALLENGES: IMPACTS OF FINANCE TRANSFORMATION

- Burden and stress for finance staff
- Year-long “blackout” in finance reporting
- Grant submission and administration
- Campus, School, departmental and individual burdens

CHALLENGES: CHANGING IT LANDSCAPE

- New security threats
- Preparing graduates to face IT growth and change
- Ethically leveraging AI

COLLABORATION | COMMUNITY | EQUITY, DIVERSITY AND ANTI-RACISM | MEANINGFUL POSITIVE IMPACT | INNOVATION | SHARED LEARNING

A world of

HEALTHY PEOPLE

SCHOOL OF PUBLIC HEALTH
UNIVERSITY *of* WASHINGTON



OUR STRENGTHS

**Our
community**

**Education
and training**

**Ideas to
impact
research**

**Community
partnerships**

**Value to the
world**

NAVIGATING THESE CHALLENGES SUCCESSFULLY REQUIRES THAT WE

- Work **TOGETHER** and across differences
- Focus on **SUPPORTING** each other
- **MAXIMIZE** our collective impact
- **COMMIT** ourselves to our mission, vision and values

ONGOING PRIORITY: SUPPORTS FOR RESEARCH

- SPH Training Grant Consortium
- Leveraging AI for research - collaboration with regional partners
- 2nd Center Discovery Expo – March 7, 2025



GOAL: MAXIMIZING IMPACT OF RESOURCES FOR RESEARCH

Enhanced last year:

- Finance transformation support
- Database to connect students with PIs for supplements
- Support for large center and training grant applications

Adding this year:

- Strategic planning on research priorities and priorities for fundraising
- Streamlining research process and burdens



GOAL: BUDGET TRANSPARENCY AND ALIGNMENT

WHERE WE WANT TO BE:

- Collaborative and transparent process to ensure fiscal resiliency
- Budget that:
 - Best fulfills vision and mission
 - Supports our values and community priorities

Collaborative Path to Fiscal Resiliency

Dean and Assistant Dean to work with chairs and faculty council on schoolwide and localized strategies for fiscal health

Dean and Assistant Dean to attend faculty meetings this fall to discuss budget and work plans

Launch budget working groups focusing on research, education and reporting needs

Develop shared set of guidelines and considerations for budget-related decisions



LISTEN & LEARN SESSIONS

Students

OCT. 31

3:00 – 4:30 p.m.

Staff

NOV. 21

3:00 – 4:30 p.m.

RSVP:



Faculty

DEC. 2

1:00 – 2:30 p.m.

RSVP:



Sessions will also be hosted in winter and spring quarters

NEW LEADERSHIP



HEIDI VAN ROOYEN

Chair, Department of
Global Health



LIANNE SHEPPARD

Interim Chair, Department
of Environmental &
Occupational Health
Sciences



ELIZABETH KIRK

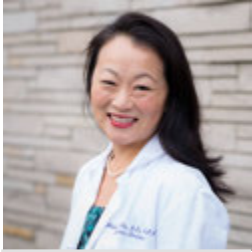
Associate Dean of
Education, School of Public
Health



**STEPHANIE
FARQUHAR**

Interim Associate Dean of
Faculty, School of Public
Health

WELCOME NEW FACULTY



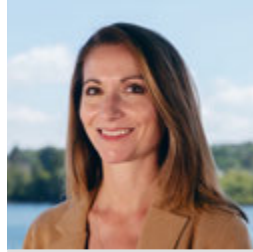
**HELEN
CHU**

Professor,
Epidemiology



**ROBIN
MEJIA**

Assistant
Teaching
Professor,
Biostatistics



**JILLIAN
PINTYE**

Associate
Professor,
Global Health



**KIRK
TICKELL**

Research
Assistant
Professor,
Global Health



**HEIDI VAN
ROOYEN**

Professor and
Chair, Global
Health

THANKS TO THIS YEAR'S FACULTY COUNCIL

2024-2025 SPH Faculty Council Members:



**EMILY
WILLIAMS**

CHAIR

Professor,
Health Systems
and Population
Health



**ALI
SHOJAIE**

CO-VICE CHAIR

Professor,
Biostatistics



**CONNIE
CELUM**

CO-VICE CHAIR

Professor,
Global Health



**RACHEL
WINER**

MEMBER

Professor,
Epidemiology



**MICHELLE
AVERILL**

MEMBER

Associate
Teaching
Professor,
Interdisciplinary
Programs



**KAREN
LEVY**

MEMBER

Professor,
Environmental
& Occupational
Health Sciences



CELEBRATING YOUR IMPACT

A world of

HEALTHY PEOPLE

COLLABORATION | COMMUNITY | EQUITY, DIVERSITY AND ANTI-RACISM | MEANINGFUL POSITIVE IMPACT | INNOVATION | SHARED LEARNING



BIostatISTICS

STUDENT

Kat Hoffman

Gertrude M. Cox
Scholarship (American
Statistics Association)

To do methodological
research developing
machine-learning
based methods
drawing on causal
inference on
longitudinal
interventions

STUDENT

Katie Paulson

2024-25 Data Science
and Demography
Training Fellowship

To revisit UN Inter-
agency Group for
Child Mortality
Estimation Bayesian
methods to estimate
national child
mortality

RESEARCH

Fast Local Ancestry Estimation (FLARE)

New method to infer
local ancestry for
genetic association
analysis to pinpoint
genes involved in
causing disease

**Sharon Browning,
Brian Browning, Ryan
Waples**

RESEARCH

New models improve cardiac risk prediction and reveal non- medical risk factors

Machine-learning
models analyze
medical records to
identify risk factors for
out-of-hospital cardiac
arrests

**Ali Shojaie, Noah
Simon, Jessica Perry**

ENVIRONMENTAL & OCCUPATIONAL HEALTH SCIENCES

RESEARCH

UW Center for Environmental Health Equity

\$12M grant to address long-standing environmental and energy justice issues

Edmund Seto, Esther Min, Elena Austin, Nicole Errett, Stephanie Farquhar

RESEARCH

UW Northwest Center for Evidence-Based Public Health Emergency Preparedness and Response

CDC-funded grant to create a more resilient region by building our capacity to prepare for, respond to and recover from disasters
Nicole Errett, Resham Patel, Tania Busch Isaksen, Betty Bekemeier and Jamie Donatuto

FACULTY

Lianne Sheppard

Ends 3-year term as chair of the EPA Clean Air Scientific Advisory Committee; advises EPA Administrator on air quality standards and research

FACULTY

Sarah Collier

\$5M USDA grant to pilot an innovative new practice and build networks to enhance regional food system resilience.

EPIDEMIOLOGY

FACULTY

**Ali
Rowhani-
Rahbar**

Inducted into the National Academy of Medicine and named director of the UW Firearm Injury & Policy Research

FACULTY

**Shirley
Beresford**

Article of the Year award from AJPM, Focus for Inclusivity in People

In coordination with the Navajo Nation, led a study to assess healthy eating and gardening as an intervention in Navajo elementary schools

RESEARCH

**National
Alzheimer's
Coordinating
Center**

Awarded \$7M to play key data roles in \$150M CLARiTI study for Alzheimer's and related dementias research

Walter Kukull, Sarah Biber

ALUMNI

Claire Rater

Received a Fulbright scholarship to research snake bite envenoming in rural Colombia

GLOBAL HEALTH

STAFF

Launched the Partners Advisory Board

Provides regular guidance and advice to DGH leadership and community to cultivate more equitable, respectful and ethical collaborations with partners

STAFF

Global Health E-Learning Program

Celebrating its 10th year, program has enrolled more than 160,000 participants and averaged 25,000 participants each of the last five years

FACULTY

Rabi Yunusa

2024 MLK Jr. Service Award

Award honors those who exemplify Martin Luther King, Jr.'s principles through commitment to addressing community needs, particularly communities of color and low income

STUDENT

Amanda Brumwell

2024-25 Magnuson Scholars

Recognizes outstanding academic performance and potential contributions to research in the health sciences

HEALTH SYSTEMS and POPULATION HEALTH

STAFF

Ria Francisco

SPH Anderson-O'Connell Award for Outstanding Staff

An exceptional grants administrator who goes above and beyond to support research and faculty

PEDAGOGY

ARCH - Wendy Barrington

In collaboration with School of Nursing, launched a four-part train the trainer series by Crystal Flemming on Anti-Racist Pedagogy

STUDENT

Miriana Duran

2024-25 Magnuson Scholars

Recognizes outstanding academic performance and potential contributions to research in the health sciences

STUDENT

Frankie Shelton

Fulbright UCL Entrepreneurship Award

For research leveraging technology and personalized interventions to address women's health, specifically the health needs of perimenopausal women

COMMUNITY PARTNERSHIPS

893 partnerships and active projects with non-academic organizations

189 faculty members supporting partnerships

Local and global partnerships

- **501** in Washington State
- **684** across the U.S.
- **203** internationally

SPH PARTNERSHIPS ACROSS THE WORLD



RESOURCES AS WE PROCESS THE ELECTION

ASPPH Webinar:
What the US Presidential
Election Outcome Means
for Public Health



<https://aspph.org/event/aspph-presents-what-the-us-presidential-election-outcome-means-for-public-health/>

UW Resources
for Navigating
the Election



<https://www.washington.edu/provost/2024election/>

An infographic on a dark purple background. At the top right is a circular diagram divided into five colored segments: 'UNPLUG' (dark blue), 'BE PRESENT' (light blue), 'REFUEL' (medium blue), 'CONNECT' (darker blue), and 'DO SOMETHING' (brownish-gold). To the left of the circle, text reads 'Written By: University of Washington Counseling Center' and 'Adapted From: Penn State University Harrisburg CAPS'. Below the circle, the title 'HOW TO RESPOND TO POLITICALLY CHARGED NEWS' is written in large, bold, white and yellow letters, followed by '-A TOOL KIT' in yellow. At the bottom, it says 'Tips and resources to cope with the current discourse' in white. There are decorative white starburst graphics around the circle.

Written By:
University of Washington
Counseling Center

Adapted From:
Penn State
University
Harrisburg CAPS

UNPLUG
BE PRESENT
REFUEL
CONNECT
DO SOMETHING

HOW TO RESPOND TO
**POLITICALLY
CHARGED NEWS**
-A TOOL KIT

Tips and resources to cope with the
current discourse

POST ELECTION GATHERINGS

Please gather with us for coffee and community at any of the following times:

NOV. 6

8:00 – 9:30 a.m.

HRC 797

NOV. 7

8:00 – 9:30 a.m.

HRC 797

NOV. 8

8:00 – 9:30 a.m.

HRC 797

A world of
**HEALTHY
PEOPLE**

SCHOOL OF PUBLIC HEALTH
UNIVERSITY OF WASHINGTON

THANK YOU

The background of the entire slide is a photograph of a sunset or sunrise over a landscape. The sky is a gradient of blue and orange. In the foreground, the dark silhouettes of several groups of people are visible on a hill. On the left, two people stand together. In the center, a couple stands close together. To the right, two more people are visible. On the far right, a family with a child in a stroller is silhouetted against the bright horizon. The overall mood is peaceful and communal.

W

COLLABORATION | COMMUNITY | EQUITY, DIVERSITY AND ANTI-RACISM | MEANINGFUL POSITIVE IMPACT | INNOVATION | SHARED LEARNING

Q&A

A world of

HEALTHY PEOPLE

COLLABORATION | COMMUNITY | EQUITY, DIVERSITY AND ANTI-RACISM | MEANINGFUL POSITIVE IMPACT | INNOVATION | SHARED LEARNING

